

ML994_CL_DESIGNER Compact Laminate Folding Shower Seat

Material Specifications

- #304 Satin Stainless Steel Frame and Support Arm- 25mmØ Tube
- #304 Satin Stainless Steel Wall Mount Guide Bracket

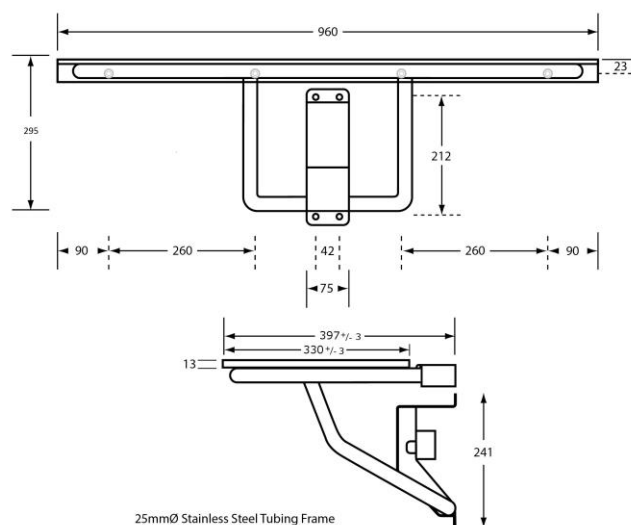
Dimensions

- 960mmW x 295mmH x 397±3mmD

Installation Guidelines

- *May be subject to Australian Building Code Regulations for height and location fixing and may be subject to placement as per architectural drawings. In all cases, this is the responsibility of the installer.*
- *Fixings and anchors are not included with the units and are the responsibility of the installer to appropriately fix the unit to the wall. The supporting wall must be adequately reinforced to carry the weight load.*

PLEASE NOTE THE SHOWER SEAT NEEDS TO BE IN AN UPRIGHT POSITION TO BE INSTALLED



1. Secure the main seat support bar to the wall using the mounting holes in the bracket provided.

The photographs and line drawings of the products presented above are representational only.
Metlam Australia Pty Ltd reserves the right to, and from time to time, make changes and improvements in design and dimensions.



2. Put shower seat main seat support bar in an upright position at 90°. Image below shows main support bar secured and set in an upright position at 90°



3. Attach wall bracket by sliding the open end over the support bar whilst the seat is in the vertical upright position.

The photographs and line drawings of the products presented above are representational only.
Metlam Australia Pty Ltd reserves the right to, and from time to time, make changes and improvements in design and dimensions.



4. The wall bracket should be positioned as per image below where the top of the wall bracket meets that main seat support bar.



5. Fasten using mounting holes provided at the bottom of the wall bracket.

The photographs and line drawings of the products presented above are representational only.
Metlam Australia Pty Ltd reserves the right to, and from time to time, make changes and improvements in design and dimensions.

Operation

- Guide Bracket shall control seat lowering into operating position.

Features

- Fold away lockable support arm with wall mount guide bracket.
- Low profile upright storage position (support arm will fold up).

Safety Warning

- Ensure that there is proper structure support within the wall. Shower seats are no stronger than the anchors and walls to which they are attached. Shower seats must be firmly secured in order to support the loads for which they are intended.

Note

- The material and construction of this seat meet AS1428.1 Force Requirements to be able to withstand a force of 1100Nm. When installed correctly this seat is rated to support 150kg.



This product is AS1428.1 compliant (accessible compliant) when installed in accordance with the guidelines.

The technical recommendations contained in this document are necessarily of a general nature and should not be relied on for specific applications without first securing competent advice. Whilst Metlam Australia Pty Ltd has taken all reasonable steps to ensure the information contained herein is accurate and current, it does not warrant the accuracy or completeness of the information and does not accept liability for errors or omissions. Any Commercial product should only be installed by a competent tradesperson and serviced/maintained by knowledgeable janitorial staff or competent people. Metlam Australia accepts no responsibility for any damage to product, walls or fixtures due to incorrect installation or maintenance of any of their products.